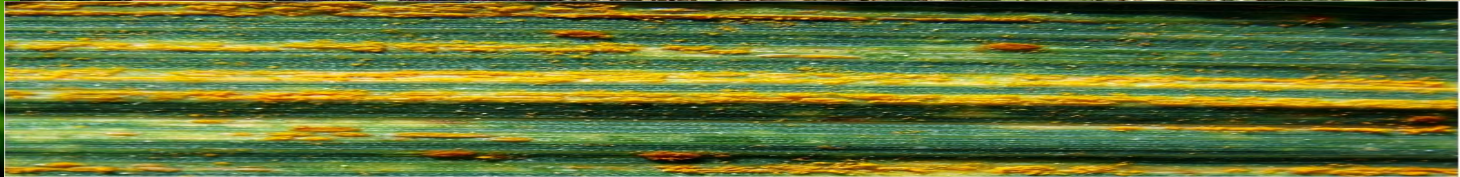




# The Wright Way: Advancing Southern Agriculture from 1977-2022



# The Time Line- Who is David Wright?

- 
- Born in 1949  
Cookville, Tennessee

- Debbie Wright

Born in Alexandria VA

Ph.D in Human  
Nutrition and Comedy



# The Time Line- Who is David Wright?



- Tennessee Tech University      1971      BS  
    Agriculture



- Virginia Polytechnic and SU      1973      MS  
    Agronomy (Soil Chemistry)



- Virginia Polytechnic and SU      1977      PhD  
    Agronomy (Plant Physiology)

# The Time Line-

## Who is David Wright?



Assistant Professor	University of Florida, NFREC	1977-1982
Associate Professor	University of Florida, NFREC	1982-1986
Professor	University of Florida, NFREC	1986- present
Associate Center Director	University of Florida NFREC	2001-2002
Specialties	Crop Physiology and Crop Management Extension Specialist	

# The Time Line- Who is David Wright?

## 10 Children

- Trent 1975
- Kelly 1977
- Seth 1983
- Jessie 1984
- Emily 1987
- Susannah 1988
- Luke 1989
- Rebekah 1992
- Juliet 1994
- William 1999



**2022 18 grandkids**

# Home on the 'Wright' Range

## Farming 101

- Soybeans
- Cotton
- Peanuts
- Tifton 9
- Perennial Peanut



# David Wright's Time Line

- Roundup Ready Systems
- Variety Testing: Conventional and Narrow Row Spacing
- Conservation Tillage Practices: Minimum and Strip
- Precision Agriculture
- Slow Release and Controlled Release Fertilizer
- Sod-based Rotation
- Asian Soybean Rust
- Organic Cropping Systems
- Hard Lock Cotton
- Sod-based Rotation with Cattle
- Carinata

# David Wright's Time Line

## Honors and Awards

Green Chemistry Award- presented by EPA Director, Christine Whitman, Washington, D.C., 2002

Beltwide Cotton Specialist of the Year 2010- New Orleans, LA

Keynote speaker Colombia National Cotton meeting in Barranquilla, Colombia April, 2011

Keynote Speaker at Future Farm World Conference, London, England June, 2011

Keynote Speaker 2012 Beltwide Cotton Conference, Jan. 2012, Orlando, FL

Multistate Research Award, Association of Public and Land Grant Universities, 2012

University of Florida Research Foundation Professorship 2012-2014

USDA NIFA, 2014 Partnership Award for Multistate Efforts for the Southeast Climate Extension Project

University of Florida High Impact Research Award on Carinata- 2015



# The North Florida Research and Education Center

- 1920-1929 Tobacco Experiment Station  
relocated again until 1929 to its current location
- Tobacco research was multi-disciplinary including agronomy, soil science, entomology, plant pathology, and horticulture
- Cattle were added in 1933



# The North Florida Research and Education Center

- In 1936 the focus of the North Florida Experiment Station broadened to include more farm crops representative of the region, including sugarcane
- In 1945 additional land was to expand field crop and livestock research and extension, and a cattle program began in 1946



# The North Florida Research and Education Center

- In 1950s the forage program developed rust resistant annual ryegrass
- Lupine and soybean evaluations began in the early 1950s
- 1957 a horticultural program started to evaluate several vegetables and small deciduous fruits including tomatoes and a soil testing laboratory was established



# The North Florida Research and Education Center

- 1970's Florunner and SunOleic (high oleic) peanut varieties were released and small grains breeding expanded from oat to include wheat and triticale



In 1977

David Wright began his career at the Agriculture Research and Education Center

The Agriculture Research and Education Center was designated as the Integrated Pest Management Center for North Florida in 1979



# The North Florida Research and Education Center

- During the 1980s conversion to 'Conservation Tillage' became a major crop management system improvement

Minimum tillage  
Strip Tillage



- Precision Agriculture
- During the 1990s the 'Agriculture Research and Education Center' was renamed the 'North Florida Research and Education Center' (NFREC)



# The North Florida Research and Education Center

- From 2000-2009 the Asian Soybean Rust became a major research effort at the NFREC, Fusarium research into 'hardlock' in cotton was discovered



- Sod-Based Rotation systems also popularized in that time-frame for integrating row- cropping with pasture and livestock as a rotation of crops with grasses, and the citrus nursery and the North Florida Forage Breeding Program was established
- Organic Cropping Systems  
partnering with Rodale Institute



# The North Florida Research and Education Center

## Slow and Controlled Release Fertilizer

The “Four R’s” of Fertilizer Use (Mikkelsen 2011)

## The “Five WR’s” of Fertilizer Use REVISED (Wright, 2012)

- apply the ‘wright’ nutrient
- at the ‘wright’ rate
- at the ‘wright’ time
- in the ‘wright’ place for the selected crop
- and in Florida, there is the 5<sup>th</sup> WR.....  
the ‘wright’ irrigation



# The North Florida Research and Education Center

- CARINATA





# Graduate Students and Staff



# International Travels



# Tools of the Trade



# Field Days



# The “Wright” Way



**Listen to the producers' needs  
Think ahead of them**